

THE  
STRATFORD  
GALLERY

# DAVID STOREY

## IN MY MIND



01.04.2023 - 14.04.2023

62 HIGH STREET, BROADWAY, WR12 7DT  
[www.thestratfordgallery.co.uk](http://www.thestratfordgallery.co.uk)  
01386335229



# DAVID STOREY

David Storey (b. 1954) is a renowned British figurative painter, and a Threadneedle Prize finalist, whose emotionally charged paintings are an exploration of memory, with half remembered people and places emerging from complex layers of texture and colour. His process is physical, preferring fingers, rags and sponges as his tools for applying colour and texture. He wants us to be absorbed by the effortless experience of gazing upon his work which itself is paradoxically underpinned by the enormous effort put in for his paintings to appear that way.

David obtained his fine art training initially at Hornsey College of Art and after that, at Middlesex University during the 1970s. After completing his artistic training, he worked as a record sleeve artist firstly at Rocket Records and then at Chrysalis where as Art Director he was responsible for a number of high profile designs, both for the main label and their two subsidiary labels 2 Tone and Go! Discs. Several of his major designs were made for The House-Martins, Paul Heaton, The Selecter and The Specials.

During this time, David also spent time lecturing at Central St. Martins in London. However, for the last 25 years he has focused his attention entirely on painting and developing his distinctive style that continues to evolve. Today, he lives and works in Brighton.





# IN MY MIND

This solo exhibition for David Storey marks an important milestone in his already fruitful career, showcasing the largest collection of new paintings he has ever assembled for a solo exhibition. This exhibition sees him in tremendous form, with new works that reach deeply into his favoured periods of history's social past with large statement canvases, his beloved egg tempera miniatures and new installation works.

Whilst recently shooting a promotional video at his studio in Brighton to accompany the exhibition, David remarked, 'I am truly excited to see such a large body of my work hung at the gallery for this show, my paintings belong in people's homes and they only really start to become what I intend for them when they have left the studio and made a connection with their eventual owners.'

This sentiment underpins the power of David's paintings. Over the last six years that we have shown his work, without exception, each decision to purchase a painting has been accompanied by the collector's desire to express the internal emotion that bonded them to the chosen work. Interested in the 'edge of living memory', David creates artworks from periods of the past which stir powerful nostalgic, personal and emotional connections.

Collectors of David's paintings are often bonded to his works by the associations his scenes create to times past, a transportation back to very real feelings that, whilst distant in time, remain very present in our hearts. A monumentalising of lives lived, memories fading and intimate ties to the our past.

Opening Saturday 1st of April and running until Friday the 14th of April. The artist will be in attendance at the opening from 3-5 pm.







# WAITING FOR A CONNECTION

Storey's paintings are powerful. Not in a manner that greedily grabs for instant attention, only to fade equally as quickly. Or in an instantly visually arresting sense, they are far more sophisticated and subtle than that. They hang quietly, awaiting connection. Each painting, I firmly believe, is unconsciously created with a mission to connect. Patiently and purposely biding its time to form a bond with a viewer who sees beyond what the artist laid down in painted intention. Their composition, tone and suggestion of detail are like incomplete strands of DNA looking for a match.

Herein lies their power. It's a wonderful scenario to imagine. As each painting begins, sketched out from an idea in the studio, its eventual owner is already decided. That person will see more than you or I, more than the artist, they will see themselves, their family, or a treasured memory that only they possess. Their DNA will match.

Such is the pleasure of representing Storey. Each work offers up sweet or bittersweet nostalgia, the power of which moves us to recollect and ponder our fading memories. When such a memory is decades old it is no longer crystal clear in our minds, it is hazy and visually fed by emotion, rather than reality. Storey's paintings are catalysts for such historic thought journeys. Whilst many might view the same

painting, which in turn stirs up a memory, there will be one person whose memories match more closely to the image they see, and that is who the painting is intended for.

Interested in what he calls 'the edge of living memory', Storey creates works that are influenced by family stories of and the look and feel of Britain in the mid 1930s to mid 1960s. Whilst not rigid parameters, it does serve as a signpost to understand his works' direction. Paying attention to the compositional and tonal decisions in each painting, we see reflections of style from within the periods he loves to create scenes for. These subtle decisions assist the 'time-machine' qualities of his work, as do the cut of clothing, formal photograph-type poses, and suggested hair styles.

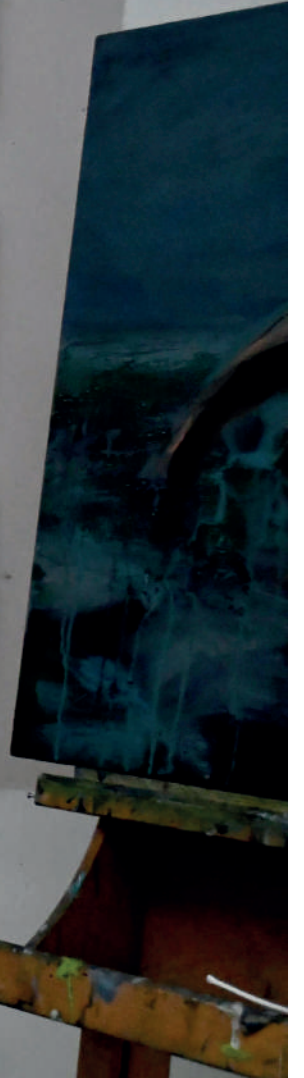
'That's my mum and dad on holiday', 'That could be my wife as a teenager', 'That's me as a little girl in the garden'. These are the comments we hear as people discuss his work with us. Sometimes with smiles and laughter, sometimes with tears but always with a degree of sentiment that is driven by that most powerful of human feelings, personal memory.

In this collection of works, the largest ever assembled for a solo exhibition, we find Storey in fabulous form. He is a wonderfully considered, humble and modest man who has

gone about this exhibition with care and great thought for its curation. If so inclined, he could name-drop an army of famous music stars for whom, back in his early career, he designed album covers and promotional artwork, but he doesn't. Or the fact that he still to this day has those same stars asking him for collaborations decades after first working with him.

Instead, he gets up early every day, gets to the studio, finds his peaceful place and plans out his work. He gathers his intentions, positions, his references and works. It is perhaps this lack of desire to feed an ego that allows him to create such authentic and sentimental works that appeal so widely. That and the endless fascination of times past and the way we were in his mind's eye.

Howard Clegg  
Director, The Stratford Gallery  
March 2023





## WHERE THE SKY MEETS THE SEA

Oil and mixed media on canvas  
100 x 80 cm

£3,800

(Storey\_D053)

## THE LISTENER

Oil and mixed media on  
canvas  
76 x 61 cm

£3,400

(Storey\_D054)





## IN LIGHT

Oil and mixed media on canvas  
120 x 100

£4,500

(Storey\_D055)

## IN MY MIND

Twelve portraits in oil and  
charcoal on wood

18 x 13 cm (per panel)  
70 x 80 cm (overall)

£6,000

(Storey\_D056)





## NK POP STUDY 1

Egg tempera and oil on paper  
(framed & glazed)

21.5 x 20.5 cm (unframed)  
53 x 43 cm (framed)

£850

(Storey\_D058)



## NK POP STUDY 2

Egg tempera and oil on paper  
(framed & glazed)

21.5 x 20.5 cm (unframed)  
53 x 43 cm (framed)

£850

(Storey\_DO57)





### NK POP STUDY 3

Egg tempera and oil on paper  
(framed & glazed)

21.5 x 20.5 cm (unframed)  
53 x 43 cm (framed)

£850

(Storey\_DO59)

## NK POP STUDY 4

Egg tempera and oil on paper  
(framed & glazed)

21.5 x 20.5 cm (unframed)  
53 x 43 cm (framed)

£850

(Storey\_D060)





## NO MATTER WHAT

Oil and mixed media  
on canvas  
53 x 73 cm

£3,200

(Storey\_D061)

## NO MATTER WHAT DIPTYCH

Egg tempera and oil on wood  
(framed & glazed)

18 x 13 cm (each panel unframed)  
53 x 43 cm (framed)

£1,350

(Storey\_D062)





## ONE BRIGHT DAY

Egg tempera and oil on wood  
(framed & glazed)

13 x 10 cm (unframed)  
43 x 33 cm (framed)

£800

(Storey\_D063)

## SUMMER HEAT 2

Egg tempera and oil on wood  
(framed & glazed)

13 x 10 cm (unframed)  
43 x 33 cm (framed)

£800

(Storey\_D064)





## BOY STANDING BY A WALL

Egg tempera and oil on wood  
(framed & glazed)

13 x 10 cm (unframed)  
43 x 33 cm (framed)

£800

(Storey\_DO65)



## DEPARTING DAY (STUDY)

Egg tempera and oil on wood  
(framed & glazed)

16 x 16 cm (unframed)  
43 x 33 cm (framed)

£950

(Storey\_D066)





## DEPARTING DAY

Oil and mixed media on canvas  
44 x 54 cm

£2,700

(Storey\_D067)

## BLUE GARDEN

Oil and mixed media on canvas  
65 x 54 cm

£3,000

(Storey\_DO68)





## BOY THROWING A BALL

Egg tempera and oil on wood  
(framed & glazed)

13 x 10 cm (unframed)  
43 x 33 cm (framed)

£800

(Storey\_D069)

## BLUE ROOM REVISITED

Oil and mixed media on canvas  
100 x 120 cm

£4,500

(Storey\_D070)





## GIRL ON A HORSE

Oil and mixed media on canvas  
76 x 60 cm

£3,400

(Storey\_D071)

## GIRL STANDING ON A PATH

Oil and mixed media on canvas  
100 x 100 cm

£4,000

(Storey\_D072)





## GIRLS IN THE SNOW

Oil and mixed media on canvas  
50 x 40 cm

£2,700

(Storey\_D073)



## THE LISTENER (STUDY)

Ink, acrylic and oil on paper  
(framed & glazed)

36.5 x 46 cm (unframed)  
55 x 65 cm (framed)

£1,400

(Storey\_D074)





## SHACK

Oil and mixed media on canvas  
40 x 50 cm

£2,700

(Storey\_DO75)

## SILENT FIGURE

Oil and mixed media on canvas  
60 x 50 cm

£3,000

(Storey\_D076)





## SOMEONE SAID

Oil and mixed media on canvas  
75 x 90 cm

£3,500

(Storey\_DO77)

## VIEW FROM THE HILL

Oil and mixed media on canvas  
60 x 76 cm

£3,400

(Storey\_D078)





## AFTER RAIN

Oil and mixed media on canvas  
90 x 75 cm

£3,600

(Storey\_D079)

## FIGURES IN A POOL

Oil and mixed media on wood  
60 x 60 cm

£3,200

(Storey\_D080)





## LOOKING BACK

Egg tempera and oil on wood  
(framed & glazed)

13 x 10 cm (unframed)  
43 x 33 cm (framed)

£800

(Storey\_DO81)



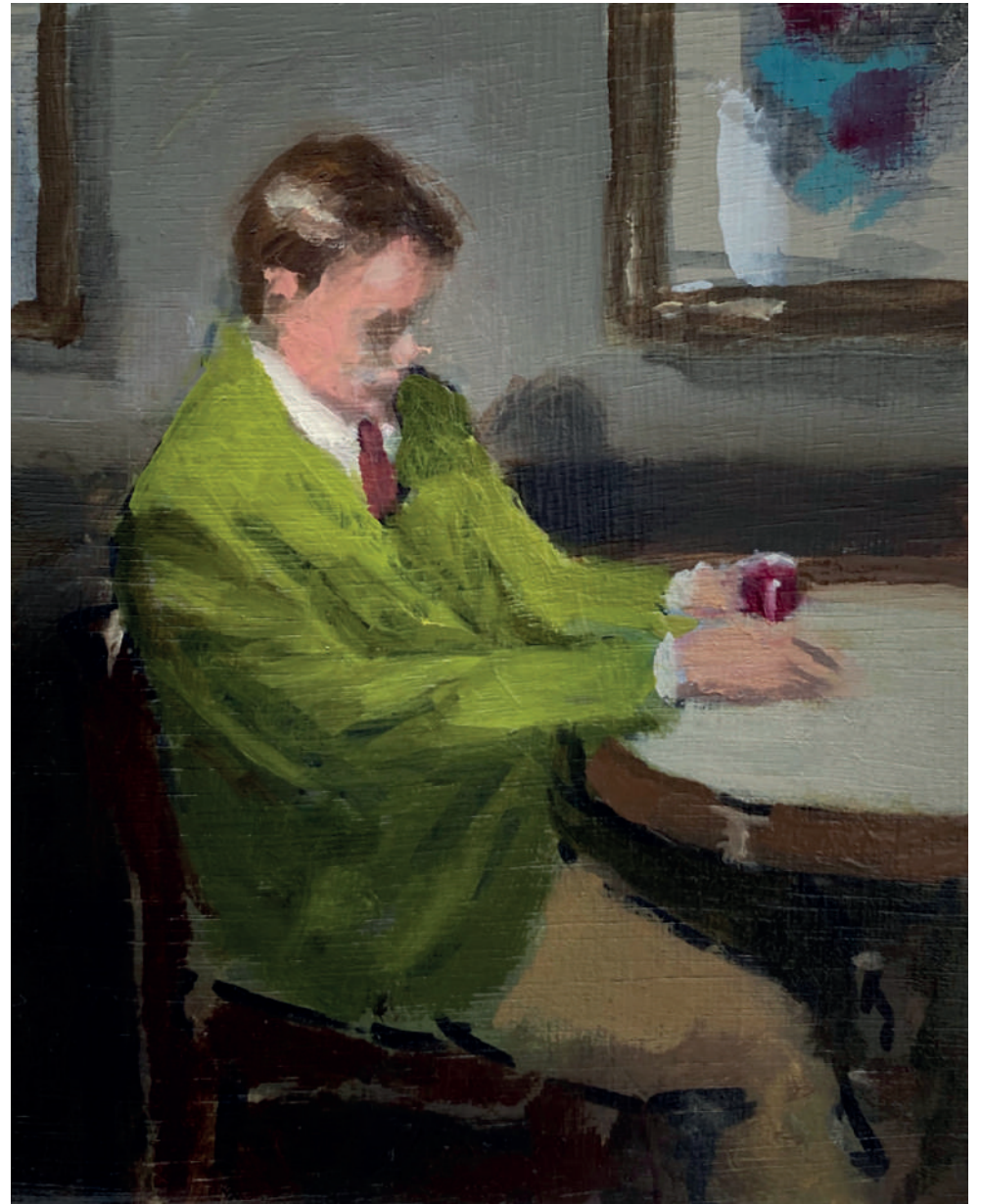
### THE DRINKER 3 (STUDY)

Egg tempera and oil on wood  
(framed & glazed)

13 x 10 cm (unframed)  
43 x 33 cm (framed)

£800

(Storey\_D082)





## HOUSE AT NIGHT (STUDY)

Egg tempera and oil on wood  
(framed & glazed)

10 x 13 cm (unframed)  
43 x 33 cm (framed)

£800

(Storey\_DO83)

## COAST ROAD

Egg tempera and oil on wood  
(framed & glazed)

10 x 13 cm (unframed)  
43 x 33 cm (framed)

£800

(Storey\_D084)





## VIEW FROM THE HILL (STUDY)

Egg tempera and oil on wood  
(framed & glazed)

10 x 13 cm (unframed)  
43 x 33 cm (framed)

£800

(Storey\_D085)

## BOY WADING

Oil and mixed media on wood  
51 x 41 cm

£2,700

(Storey\_D086)





## WOMAN IN A CAFE

Oil and mixed media on canvas  
40 x 50 cm

£2,700

(Storey\_D087)

## FRIENDS WALKING

Oil and mixed media on canvas  
50 x 60 cm

£3,000

(Storey\_D088)





## HOUSE AT NIGHT

Oil and mixed media on canvas  
40 x 50 cm

£2,700

(Storey\_D089)



MAN WAITING IN A  
FOREST

Oil and mixed media on  
canvas  
76 x 102 cm

£3,800

(Storey\_DO90)





### THE DRINKER 3

Oil and mixed media on wood  
65 x 65 cm

£3,200

(Storey\_D091)

## COUPLE DANCING

Oil and mixed media on canvas  
51 x 61 cm

£3,000

(Storey\_D092)



THE  
STRATFORD  
GALLERY

All paintings are available to purchase upon receipt of this catalogue. If you have any queries please contact a member of the gallery team via [art@thestratfordgallery.co.uk](mailto:art@thestratfordgallery.co.uk).

[www.thestratfordgallery.co.uk](http://www.thestratfordgallery.co.uk) | [@the\\_stratford\\_gallery](https://www.instagram.com/the_stratford_gallery)



# ARTIST'S CV

## Education

1996 Summer School, Slade School of Art  
1976 BA Art & Design, Middlesex University  
1973 Foundation Course, Hornsey College of Art

## Competitions and Prizes

2020 Finalist Discerning Eye Exhibition, Mall Galleries, London  
2019 Finalist Discerning Eye Exhibition, Mall Galleries, London  
2013 Finalist, Saatchi Art 'Showdown'  
2012 Finalist, Threadneedle Prize, Mall Galleries, London  
2012 Finalist, The Sunday Times Watercolour Competition

## Selected Exhibitions

2022 Solo Show, Cameron Contemporary, Hove  
2021 Solo Show, Panter and Hall Gallery, London  
Solo Show, Andelli Art, Wells, Somerset  
Group Show, Stratford Gallery, Stratford  
Group Show, Cameron Contemporary, Hove  
Group Show, Castlegate House Gallery

2020 Group Show, JP Fine Art Consultants, London  
Upstart Gallery, The Art Buyer, Putney, London  
Group Show, C24 Gallery, New York  
Festival Show, Cameron Contemporary, Brighton  
Group Show, The Stratford Gallery  
Group Show, Andelli Art, Wells, Somerset  
2019 The Seventh View, C24 Gallery, New York  
Joint Show, Cameron Contemporary, Brighton  
Solo Show, Panter and Hall, London  
Nadia Waterfield Fine Art, Andover  
Saul Hay Fine Art, Manchester  
FFS, Saatchi Gallery, Kings Road, London  
Group Show, J.P. Art Consultants, London  
Group Show, Browse Gallery, Berlin  
Sussex ArtWave Festival, IDA Contemporary  
'Being Allowed To Look', Saul Hay Fine Art, Manchester  
2018 Group Show, Castlegate House Gallery, Cumbria  
'Somewhere Else', The Stratford Gallery  
'Bond at Bletchley Park', Bletchley Park Museum  
2018 The Brighton Festival Show, Cameron Contemporary  
Group Show, Saul Hay Fine Art, Manchester

2017 Solo Exhibition, Panter and Hall, London  
Solo Show, Highgate Contemporary, London  
2016 'Art Without Boundaries' Exhibition, Leyden  
Gallery, London  
2015 Solo Show, Panter and Hall, London  
2014 Solo Show, Thomas and Paul Contemporary  
2011 Cultivate, Vyner Street Gallery, London  
2008 Lautieri Moores Open, Cork Street Gallery,  
London  
2005 Encounters, Brighton Museum and Art Gallery  
2003 Sussex Open, Brighton Museum and Art  
Gallery

## Media & Events

2021 Article in Artists and Illustrators magazine  
2019 'Meet The Artist' at the Panter and Hall  
Gallery, London  
2018 The Southampton Review, New York  
2016 Judge at the Travers Smith Art Prize  
Feature 'Inside the Studio', Saatchi Art  
2014 In conversation with Mike Southon at the  
Thomas & Paul Gallery, London  
2011 BBC2 Arts Programme 'Show Me the Monet'



No part of this publication may be reproduced in any form or by any means without prior consent from The Stratford Gallery Ltd.

Copyright The Stratford Gallery Ltd 2023.